

URL Link: <https://ultimateinspiration.com.au/product/osha-laundry-bag>



Description

Designed specifically for environments that deal with high levels of washing every week, our Osha Mesh Laundry Bag has been manufactured to last. Using high tension and strong 100% polyester construction, each bag can be secured with a zipper for the contained and hygienic transportation of your delicate garments. Able to withstand the high temperatures found within washing machines – allowing you to place the bag in its entirety within your washing load. Please note that a standard digital transfer CMYK cannot match exactly PMS. Converting artwork colours from CMYK to PMS costs TBA net per colour. For digital transfer printing, please ensure art and colours are at full opacity. Material: Polyester

Details

Item Size
240mm W x 296mm H

Colours
White

Decoration Options
Digital Transfer

Decoration Areas
Digital Transfer 210mm W x 148mm H

Notes

Details such as measure, weight indications are approximate figures only. We reserve the right to change colours, printable areas, technical details or designs.

Why Should You Buy From Us?



Long Trustworthy & Recognised Member of APPA



Price Beat Policy for Same Item



Fast Responsive Team & Turnaround Time



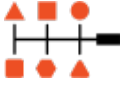
Best Service, Best Price & Best Quality



5-Star Google Reviews & Thousands of Happy Customers



100% Australian Company



Big Variety of Goods from Budget to Premium



Nationwide Service & Delivery

Ready to Order?

If you would like to proceed then simply reply to our email and tell us your print requirements and supply your logos in vector EPS, AI or PDF. We will provide pre-production mock up proof for approval prior to production if the quote is acceptable and you like to proceed with this order.

This Marketing Info Sheet is created on 26/07/2025
Copyright © 2021 ULTIMATE INSPIRATION

A. P.O. Box 5179 Pinewood VIC 3149 **ABN.** 57 161 525 793
P. 1300 653 148 **E.** sales@ultimateinspiration.com.au
W. WWW.ULTIMATEINSPIRATION.COM.AU

